



CASE STUDY:

HMAS CERBERUS

Location

Crib Point, Victoria

Description

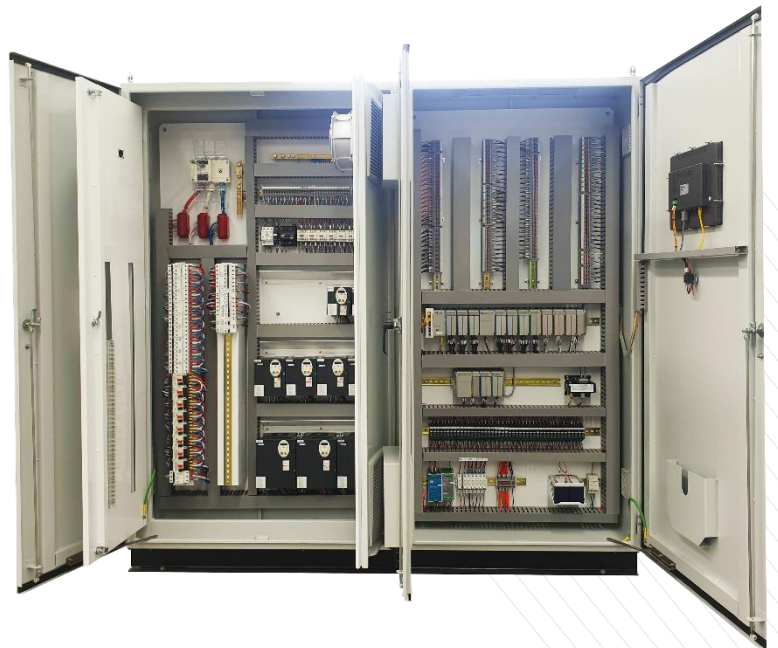
Control Board for a Water Treatment Plant
at a Naval Base

Features

- 9 x pumps with Altivar VSDs
- 8 x pumps on DOL starters
- 15" HMI Display
- Allen Bradley CompactLogix PLC with 400+ I/O

Scope

Design, Construction, PLC/HMI programming, Commissioning



METROID
ELECTRICAL ENGINEERING

www.metroid.net.au



HEAD OFFICE:
244 WOODWARD RD
GOLDEN SQUARE VIC 3555



TELEPHONE
03 5442 5444



EMAIL
info@metroid.net.au