



# CASE STUDY:

## EDINBURGH WTP

### Location

RAAF Base Edinburgh, South Australia

### Description

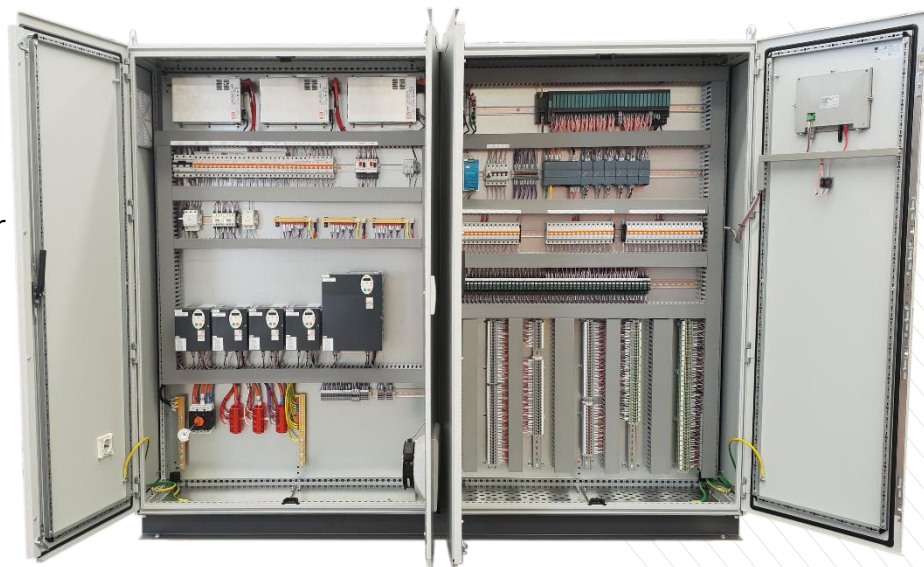
Removal of PFAS impacted groundwater that originates from the Fire training area on site

### Features

- 5 pumps on VSDs
- 2 pumps on DOL
- 300+ IOs on a Siemens S7-1200 PLC
- 4G Remote monitoring access

### Scope

Design, construction, PLC/HMI programming and commissioning



**METROID**  
ELECTRICAL ENGINEERING

[www.metroid.net.au](http://www.metroid.net.au)



**HEAD OFFICE:**  
244 WOODWARD RD  
GOLDEN SQUARE VIC 3555



**TELEPHONE**  
03 5442 5444



**EMAIL**  
[info@metroid.net.au](mailto:info@metroid.net.au)